

Original investigation | [Open access](#) | [Published: 02 February 2021](#)

Performance of the recommended ESC/EASD cardiovascular risk stratification model in comparison to SCORE and NT-proBNP as a single biomarker for risk prediction in type 2 diabetes mellitus


[Suriya Prausmüller](#), [Michael Resl](#), [Henrike Arfsten](#), [Georg Spinka](#), [Raphael Wurm](#), [Stephanie Neuhold](#), [Philipp E. Bartko](#), [Georg Goliasch](#), [Guido Strunk](#), [Noemi Pavo](#) , [Martin Clodi](#) & [Martin Hülsmann](#)

Cardiovascular Diabetology **20**, Article number: 34 (2021) | [Cite this article](#)

4302 Accesses | 17 Citations | 10 Altmetric | [Metrics](#)

Abstract

[Download PDF](#) 

[Download ePub](#) 

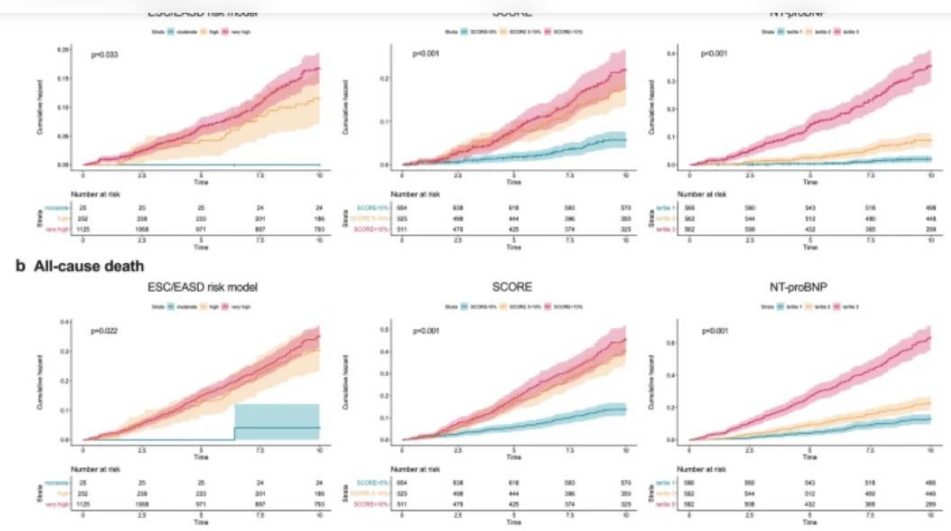
Sections [Figures](#) [References](#)

- [Abstract](#)
- [Background](#)
- [Methods](#)
- [Results](#)
- [Discussion](#)

Performance of the recommended ESC/EASD cardiovascular risk stratification model in comparison to...

Download PDF

Download ePub



Kaplan–Meier curves showing the cumulative incidence of (a) cardiovascular and (b) all-cause death for the ESC/EASD risk model (left), SCORE (cut-off: < 5%, 5–10%, > 10%) (middle), and NT-proBNP tertiles (right)

Sections

- Abstract
- Background
- Methods
- Results
- Discussion
- Limitations
- Conclusion
- Availability of data and materials